

TALL SHIP RACES 2022

CRUISE IN COMPANY

HARLINGEN (NL) – ANTWERP (BE)

22/07/2022 – 25/07/2022

HOW TO GET TO HARLINGEN

Harlingen is located in the province of Friesland. From the capital Amsterdam it is about one hour drive by car.

Plane

International flights arrive in the Netherlands at Amsterdam Schiphol (AMS), Rotterdam The Hague Airport (RTM), Groningen Airport Eelde (GRQ), Eindhoven Airport (EIN) and Maastricht Aachen Airport (MST).

Check websites in your country that compare different airlines for flying with the best deal.

Useful websites:

www.klm.nl

www.vliegtickets.nl

www.skyskanner.nl

www.cheaptickets.nl

Bus or train

Harlingen can be reached by bus or train.

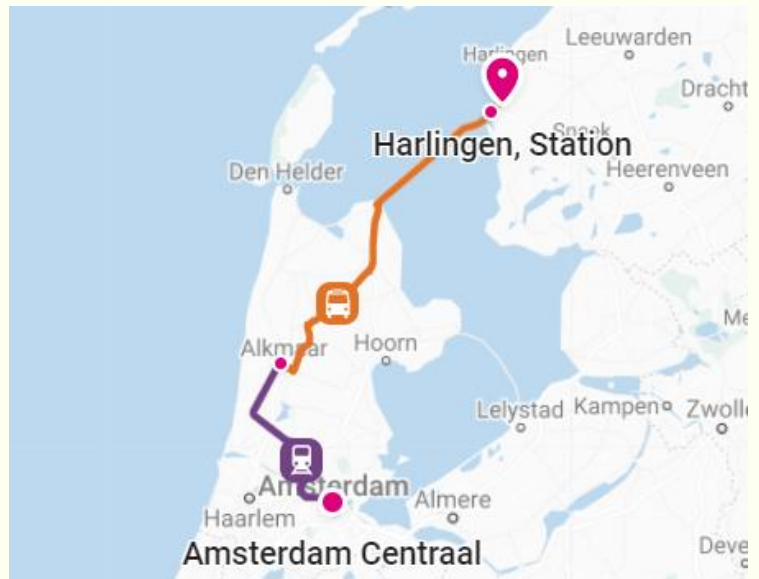
1. When traveling (also from Amsterdam (Schiphol), Rotterdam, Eindhoven or Groningen), you travel best by train to Leeuwarden. There is a direct train connection from Leeuwarden to Harlingen.

Check www.ns.nl or www.9292ov.nl for your personal travel schedule. (English available)

2. Check www.9292ov.nl for traveling by bus.

3. There are 1200+ cheap connections by bus via www.flixbus.nl (multiple languages available).

Closest stop with direct train connection to Harlingen is Groningen, with 34 direct Flixbus destinations.



WINDSEEKER

P.O. box 16664 // 1001 RD Amsterdam // The Netherlands
T: 0031 6 8279 0115 // E: info@windseeker.org // www.windseeker.org
BIC/SWIFT: INGBNL2A // IBAN: NL90 INGB 0009 349588
COG: 34175373 // VAT: 1780.05.691.B01

Rent a car at the airport

It's possible to rent a car at the airports. Check the following websites:

www.rentalcars.com

www.sixt.nl

www.hertz.nl

By Car

- Coming from the Southwest of the Netherlands (AMS, RTM):

Follow Amsterdam and then keep driving in the direction of Leeuwarden (A7) and N31. After 10 km on the N31 you find Harlingen.

- Coming from the Southeast of the Netherlands (EIN, MST):

Route (A6 or A27) to Almere, Lelystad, Emmeloord, Lemmer, Joure. Then (A7) to Sneek, Bolsward, Makkum and N31 to Leeuwarden. After 10 km on the N31 you find Harlingen.

- Coming from the East of the Netherlands (GRQ):

Route to Leeuwarden (A7/N7 or A32). Then N31 to Harlingen. After 25 km on the N31 you find Harlingen.

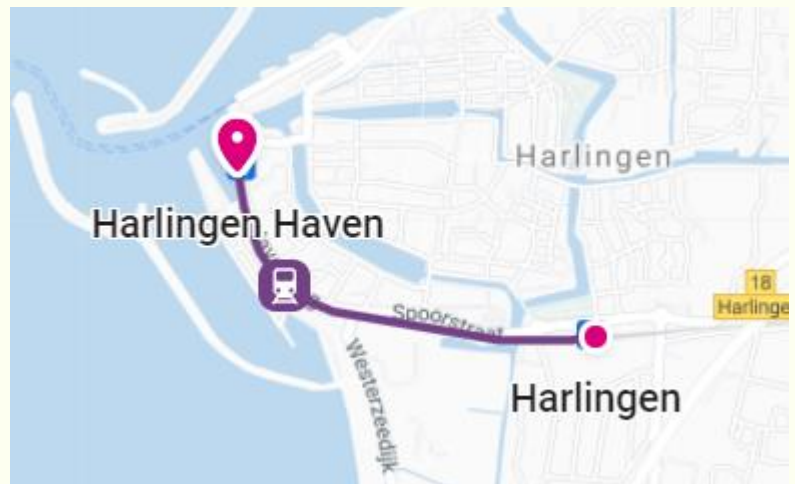
Taxi

At the airports and in front of practically all the train stations cabs are waiting to take you all over the country. Taxis aren't cheap, for short distances (5 km) an approximate €15 is charged.

IN HARLINGEN

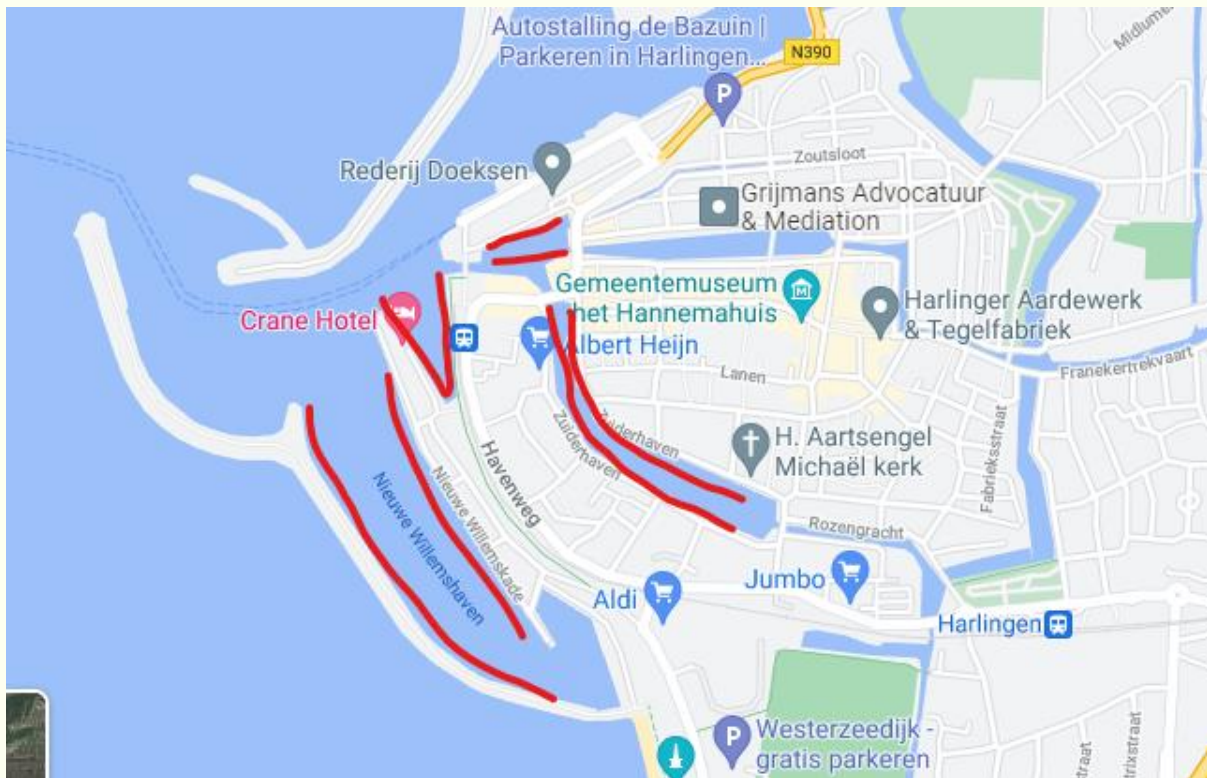
Once you get to Harlingen Station, you will need to get to the berth where the ships will be moored.

You can easily get there either by bus, train, taxi in 5 minutes, but you can also have a nice walk and see the city (if the weather allows you to do so) which will take around 15 minutes.



WINDSEEKER

P.O. box 16664 // 1001 RD Amsterdam // The Netherlands
T: 0031 6 8279 0115 // E: info@windseeker.org // www.windseeker.org
BIC/SWIFT: INGBNL2A // IBAN: NL90 INGB 0009 349588
COC: 34175373 // VAT: 1780.05.691.B01



HOW TO GET BACK FROM ANTWERP

Train

You can easily travel back from Antwerp by train. National and international trains such as Thalys and Eurostar stop in Antwerp-Central Station and Antwerp-Berchem. If you are travelling to London/UK, you may need to take a national Belgium train to Brussels and from there Eurostar train to London.

Eurostar - <http://www.eurostar.com> ; Thalys - <https://www.thalys.com> ; DB - <http://www.bahn.de> ;

Belgium national trains - <https://www.belgiantrain.be/en>

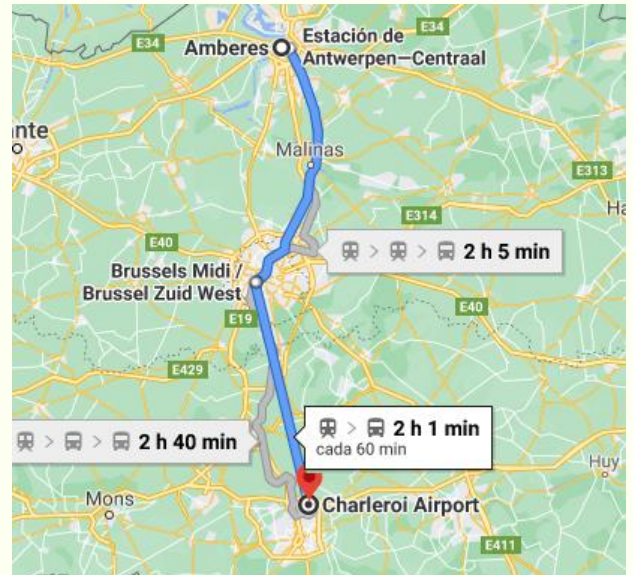
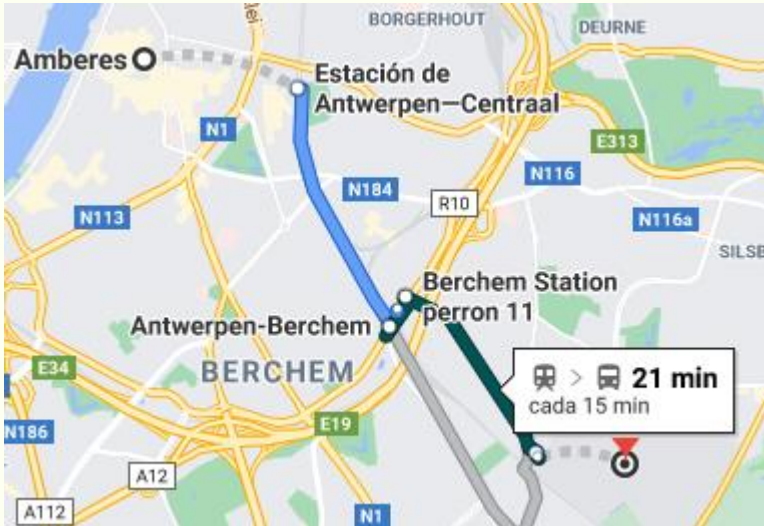
Plane

Antwerp is situated near two airports. You can fly back home either from Antwerp airport or Brussels Charleroi airport.

For going to Luchthaven Antwerp Airport you can pre-book a taxi transfer [here](#).

Public transport is a cheaper, but slightly longer, option – it will take about 20-30 min to get you to the city. Unfortunately there is no direct connection to the centre, but you can find the most up to date information about possible routes at the airport's website [here](#).

If you need to travel from Brussels Charleroi Airport, then you will need to take a train or bus from Antwerp to Brussels ([check here](#)), and then from Brussels central train station to Charleroi airport ([check here](#)). The complete journey takes around 2,5 hours.



Car

Antwerp is located at a central junction of several European motorways and can be easily reached by car. Bear in mind that traffic on the Antwerp Ring road can be heavy at times and that various large construction projects are planned in the period from 2015 until 2022, which will cause significant traffic disruptions.

To Amsterdam-Breda (E19) or to Bergen op Zoom (A12)

To Cologne – Aachen – Liège – Hasselt (E40 - E314 - E 313) To Eindhoven (E34)

To Paris - Brussels (E19) To Brussels (A12)

To Lille - Kortrijk - Ghent (E17) or Ostend - Bruges (E40), via Ghent (E1)