



WINDSEEKER

SET COURSE FOR NEW HORIZONS

THE TALL SHIPS RACES 2023

RACE 2

HARTLEPOOL (UK) – FREDRIKSTAD (NO)

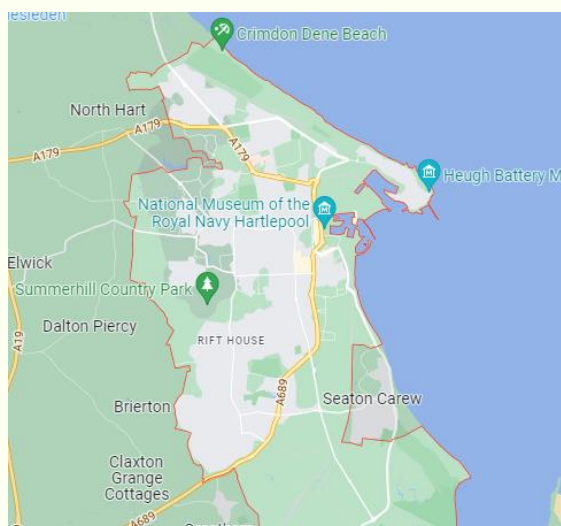
08/07/2023 – 17/07/2023

If you would like to get help with booking your travel to/from the ports, check out [The Travel Club](#) website or contact Moni van Hoek at:

moni@thetravelclub.nl

+ 31 6 41039836

HOW TO REACH HARTLEPOOL



BY PLANE

The nearest airport to Hartlepool is Durham (MME) Airport which is 24 km away. Other nearby airports include Newcastle (NCL) (50 km), Leeds Bradford (LBA) (95 km), Manchester (MAN) (162 km), and Edinburgh (EDI) (195 km).

The fastest and cheapest way to reach Hartlepool is via Newcastle International (NCL) Airport.

For the prices and timetables check the following website:

<https://www.newcastleairport.com/our-destinations/flight-timetables/>

WINDSEEKER

PO box 16664 // 1001 RD Amsterdam // The Netherlands
+31 6 8279 0115 // info@windseeker.org // www.windseeker.org
BIC/SWIFT: INGBNL2A // IBAN: NL90INGB0009349588
COC: 34175373 // VAT: NL002008163B34

BY TRAIN

Northern Rail

From Monday to Saturday Hartlepool is served by hourly trains in each direction. Southbound services run to Middlesbrough via Seaton Carew, Billingham, Stockton, and Thornaby, with some journeys extending to Nunthorpe. Northbound services run to Newcastle, calling at Seaham, Sunderland, and Heworth, with some continuing to MetroCentre, Hexham, and Carlisle.

Grand Central

There are five open-access Grand Central services per day in each direction, except on Sundays when there are four. Northbound trains provide a second connection to Sunderland, running directly without calling at Seaham. Southbound services continue from Hartlepool to call at Eaglescliffe, Northallerton, Thirsk, and York, before terminating at London King's Cross.

For up-to-date timetable and ticket prices access: <https://www.nationalrail.co.uk/>

BY BUS

The following are links to the bus timetables of operators who provide services in Hartlepool:

[Stagecoach Buses](#)

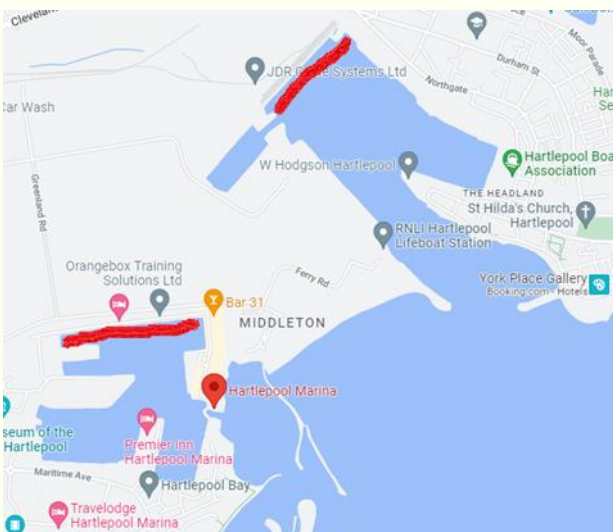
[Arriva Buses](#)

[Scarlet Band Buses](#)

[Go North East](#)

IN HARTLEPOOL

Getting to the harbour



Once you are in Hartlepool, you will need to go to the berth where the ships are moored, the easiest way for that is to use public transport, such as a tram or bus. The vessels will be mooring at two different sites in Hartlepool linked by a walkway – the sites will be Hartlepool Marina (most will be moored along the wall where it says ‘Orangebox solutions’ and the other area is PD Ports (says JD Cable Systems on the map). Marked with the red color on the map.

WINDSEEKER

PO box 16664 // 1001 RD Amsterdam // The Netherlands
+31 6 8279 0115 // info@windseeker.org // www.windseeker.org
BIC/SWIFT: INGBNL2A // IBAN: NL90INGB0009349588
COC: 34175373 // VAT: NL002008163B34

The following transport lines have routes that pass near the mooring places:

Bus: [1](#), [24](#), [7](#)

Train: [NORTHERN](#)

HOW TO GET BACK FROM FREDRIKSTAD

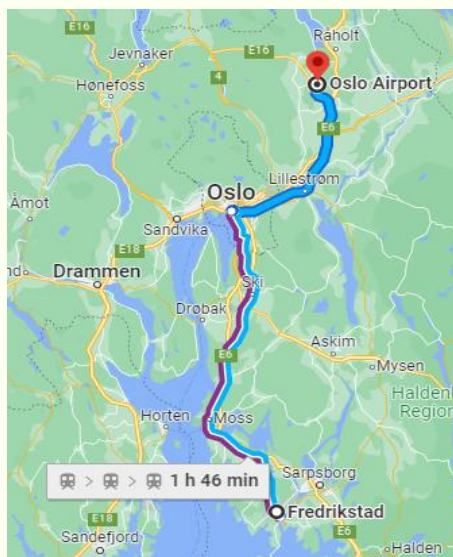
BY PLANE

The nearest airports to Fredrikstad are:

- [Oslo Gardermoen \(OSL\)](#)
- [Sandefjord \(TORP\)](#)

Check websites in your country that compare different airlines for flying with the best deal, like [Skyscanner](#)

How to reach Oslo Gardermoen Airport (OSL) from Fredrikstad



By bus: there is a direct connection between Fredrikstad bus terminal and Oslo Airport operated by the company Vy Buss. The duration of the ride is 2h10 and the cost is between €30 and €40.

By train: if you want to take the train you have to go from Fredrikstad stasjon to Oslo S station, it takes 1h12 and there is a train every hour. The line is R20 or R20x. Then from there, you have to take the train to Oslo lufthavn stasjon, it takes 22 minutes and there is a train every 20 minutes. The total duration is 1h46 and the price is from €28 to €33.

Useful websites and timetables:

- [VyBus](#)
- [VyTrain](#)